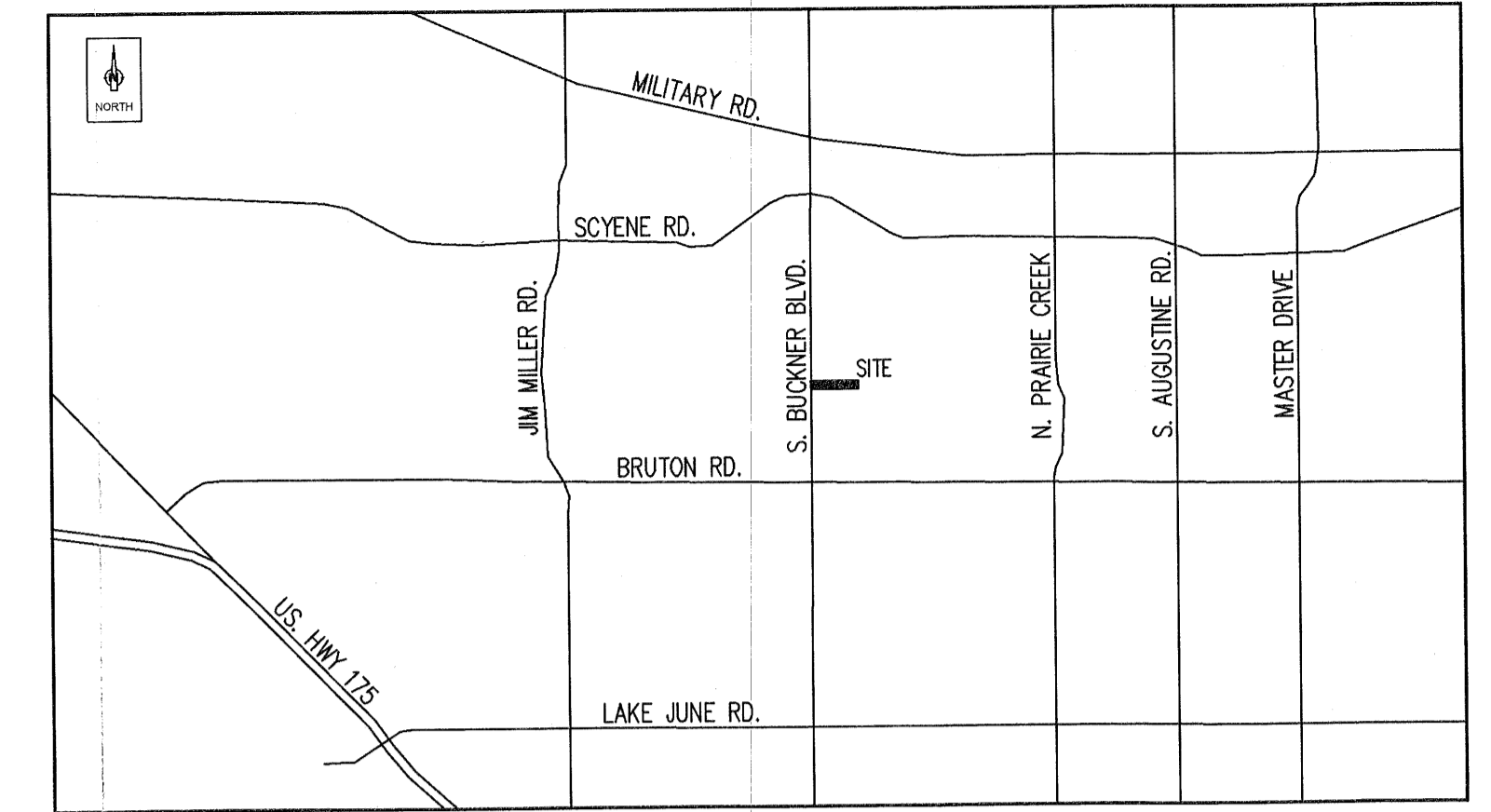
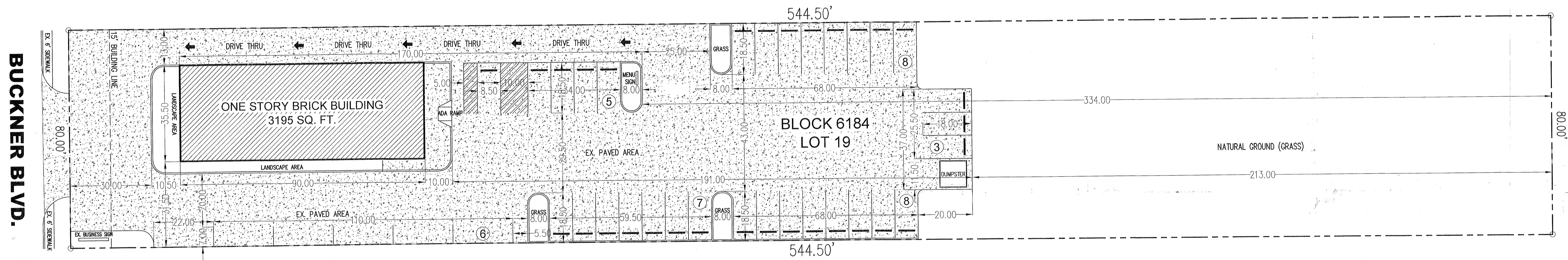


0' 5' 10' 20' 40'



LOCATION MAP



Approved
City Plan Commission
April 5, 2018
Specific Use Permit
No. 2293

PARKING ANALYSIS:

LAND USE: RESTAURANT WITH DRIVE-THRU
 PARKING REQUIRED: 1/100 SQ. FT. OF FLOOR AREA
 BUILDING AREA: 3195 SQ. FT.
 PARKING REQUIRED: 3195/100 = 31.95 SPACES
 PARKING PROVIDED: 37 SPACES

LAND AREA: 43,560 (1 ACRE)
 LOT COVERAGE: 6.27%

LANDSCAPE AS PER ARTICLE X OF DALLAS DEVELOPMENT CODE.
 ZONING: PD 366

30863

APPROVED BY
CITY COUNCIL
MAY 09 2018
CITY SECRETARY

180711

Z178-183			
SITE PLAN			
2306 S. BUCKNER BLVD.			
DEPARTMENT OF CURRENT PLANNING			
CITY OF DALLAS			
DESIGN BY:	DRAWN BY:	DATE:	SCALE:
ARANDA	ARANDA	MAY 9, 2018	1" = 20'